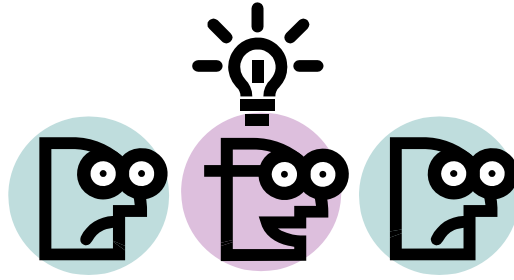


Type of Chiropractic Care Recommended For You



Type	Treatment	Duration	Revaluation	Prognosis		
Type 1	2-3 Per Week	4 Weeks	Every 10 Visits	Becomes Elective		
Type 2	3-4 Per Week	8 Weeks	Every 10 Visits	Becomes Type 1		
Type 3	Every Other day	12 Weeks	Every 10 Visits	Becomes Type 2		
Elective	Every 4-6 weeks	10 Months	Every 10 Visits	Stay At Same		